



BRIEFCAM v5.3

DATASHEET

BriefCam

BriefCam's comprehensive Video Content Analytics platform drives exponential value from surveillance camera investments by making video searchable, quantifiable and actionable. Review hours of video in minutes; quantitatively analyze video to derive actionable insights for data-driven safety, security and operational decision making; and respond immediately to critical situational changes in the environment, all while effectively balancing sensitivity, accuracy and efficiency:

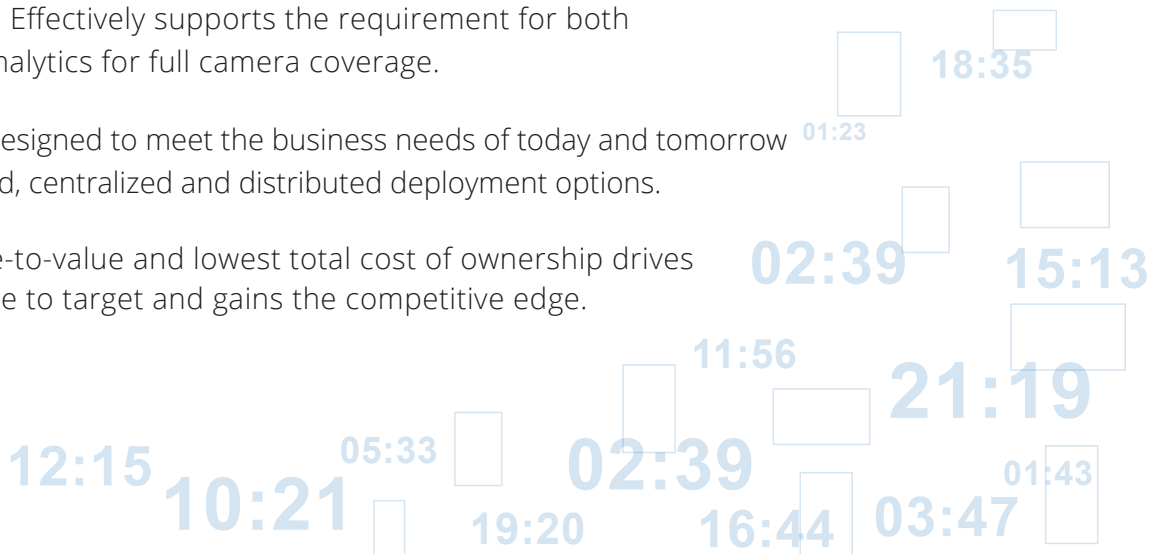
COMPREHENSIVE & EXTENSIBLE: A robust portfolio of critical video analytics capabilities fully integrated for a "better together" paradigm.

UNMATCHED ACCURACY: Leverage market leading accuracy for detection, classification and recognition across object classes, attributes, behaviors and faces.

SUPERIOR PERFORMANCE: Effectively supports the requirement for both on-demand and real-time analytics for full camera coverage.

FLEXIBLE ARCHITECTURE: Designed to meet the business needs of today and tomorrow with on-premise, cloud, hybrid, centralized and distributed deployment options.

EASE OF USE: Quickest time-to-value and lowest total cost of ownership drives productivity, accelerates time to target and gains the competitive edge.



BRIEFCAM SOLUTIONS



REVIEW

Accelerate Investigations

CASE MANAGEMENT: Organize all video assets of an investigation in a single container, bookmark objects of interest, and summarize case findings (including all relevant exhibits) in an exportable report, while dynamically collaborating on cases with other users.

VIDEO SYNOPSIS: Simultaneously presents objects that have appeared at different times within the video. The result is a dramatically shorter video segment that fully preserves the viewer's ability to analyze the scene, enabling the review of hours of video in minutes and sometimes seconds.

MULTI-CAMERA SEARCH: Advanced multi-camera search powerfully identifies men, women, children and vehicles of interest with speed and precision, using appearance similarity, apparel, color, size, speed, path, direction, and dwell time filters.

APPEARANCE SIMILARITY: Instantly locate people, vehicles, and other items of interest by searching for similar looking objects.

FACE RECOGNITION: Accurate face recognition rapidly pinpoints people of interest using digital images extracted from the video or from external sources.

VISUAL LAYERS: Create visual analytics for activity, dwell time, common paths and object interaction.

FILTER PRESETS: Save filter settings for later reference and retrieval across all modules.

FILTER TOLERANCE: Adjust tolerance levels to refine search results for class, attributes, color, dwell time, direction, area, path, and face and appearance similarity.

DENSITY & SPEED CONTROL: Increase or decrease the number and speed of events shown at once.

SORT CONTROL: View the events by relevance or by order of occurrence.

ZOOM IN: Easily zoom in to items of interest.



RESEARCH

Derive Operational and Business Intelligence

POWERFUL OPERATIONAL INTELLIGENCE PLATFORM:

Leverages video metadata aggregated over time to quantitatively analyze video for data-driven safety, security and business decision making.

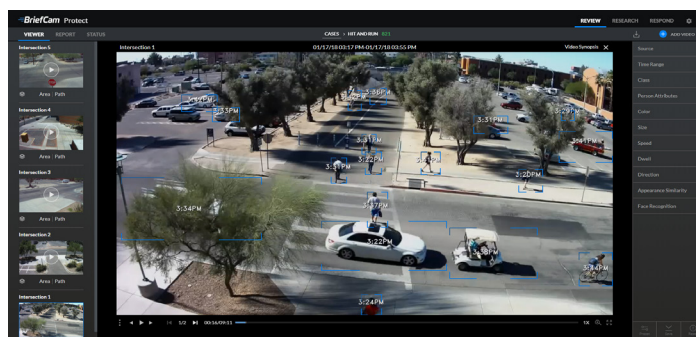
DASHBOARD LIBRARY: Out-of-the-box, extensible library of vertical-specific dashboards to visually represent object movement and interaction, demographic segmentations, behavior trending, hotspots and object interactions.

HIGHLY CUSTOMIZABLE: Interactive and easy to use dashboards for visualizing and analyzing data.

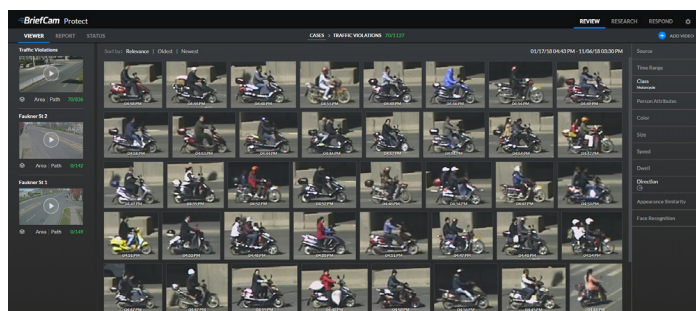
CUSTOM DIMENSION ANALYSIS: Define dimensions for enabling advanced, detailed area and path analysis.

THIRD PARTY DATA SOURCES: Seamlessly correlate video content with third party data sources, such as Point of Sale, Time Management, and Access Control, for a uniquely informative view of your environment.

FLEXIBLE SCHEDULING: Schedule daily or one-time dashboard generation for any VMS video source.



BriefCam v5.3 Review & Search with Video Synopsis



BriefCam v5.3 Multi-Camera Search



RESPOND

Attain Situational Awareness

REAL-TIME ALERTS: Trigger real-time alerts, based on face recognition, vehicles and people of interest in time sensitive situations. (Currently available for Bosch, FLIR Latitude, Genetec Security Center, IndigoVision and Milestone XProtect).

SMART ALERTS: Respond to complex situational changes in the environment, while effectively balancing sensitivity, accuracy and efficiency.

WATCHLISTS: Scalable face recognition watchlist management and powerful alert rule configuration enables rapid notification of events in your environment.

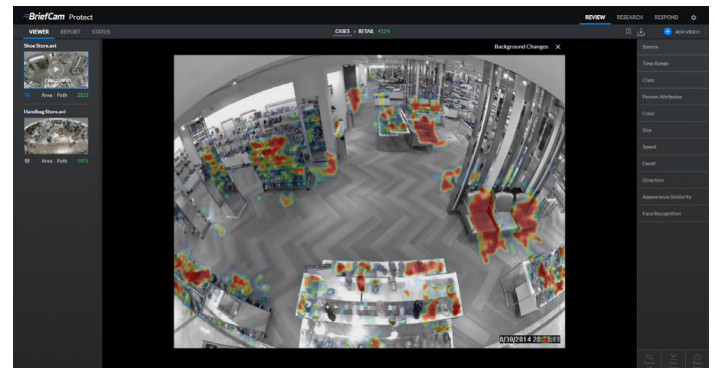
NOTIFICATIONS: Send notifications to messaging services, the VMS alarms area and Chrome browsers. (Alarms area integration for Genetec Security Center and Milestone XProtect).

PROCESSING TASKS: Display and manage current and previous processing tasks and queues.

SSO COMPATIBILITY: Secure sign-in authentication.

GDPR COMPLIANCE: Easily delete or export personally identifiable data, enabling GDPR compliance.

BRIEFCAM AT WORK



BriefCam v5.3 Review & Search With Object Interaction



DEVELOPER TOOLS

Better Together

HTTP REST GENERIC PLUG-IN: Enables third party integration with BriefCam solutions, including real-time (RSTP) video ingestion.

BRIEFCAM RESPOND OUTBOUND API: Enables integration of BriefCam alerts into third party alerting infrastructure.



BriefCam v5.3 Quantitative Insights With Customizable Dashboards & Reports



ADMINISTRATION

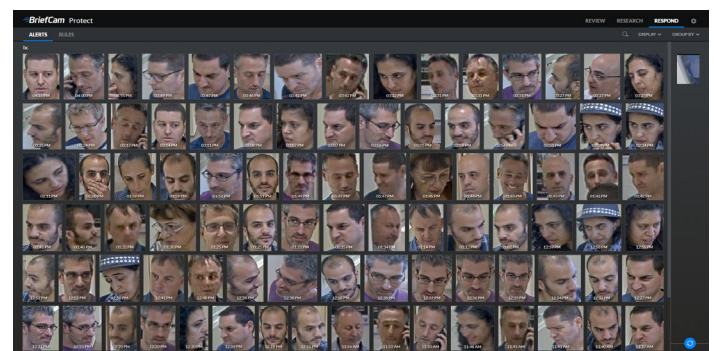
Flexible Deployment Options

VMS PLUG-INS: Add and remove an unlimited number of VMS plug-ins.

CAMERA MANAGEMENT: View and add activated cameras.

USER MANAGEMENT: Add and remove users.

ACTIVE DIRECTORY: Assign licenses to active directory users.



BriefCam v5.3 Customizable Alerts with Real-Time Face Recognition

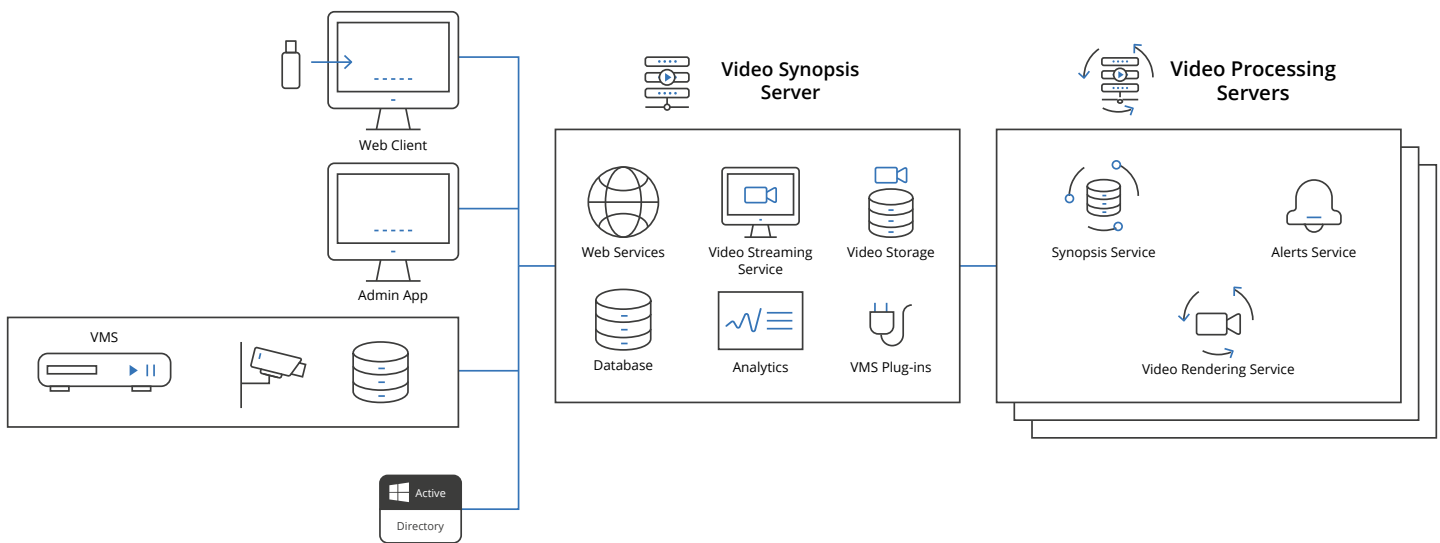
PLATFORM ARCHITECTURE

SOLUTION COMPONENTS

VIDEO SYNOPSIS (VS) SERVER: Responsible for web, video streaming, data analytics and aggregation services, metadata database, video file storage, load balancing, VMS plug-ins, and user management.

PROCESSING SERVER (PS): Responsible for video decoding, rendering, object extraction and classification. Comprised of single or multiple GPU cards. Multiple servers can be deployed per site depending on video processing requirements.

DISTRIBUTED ARCHITECTURE

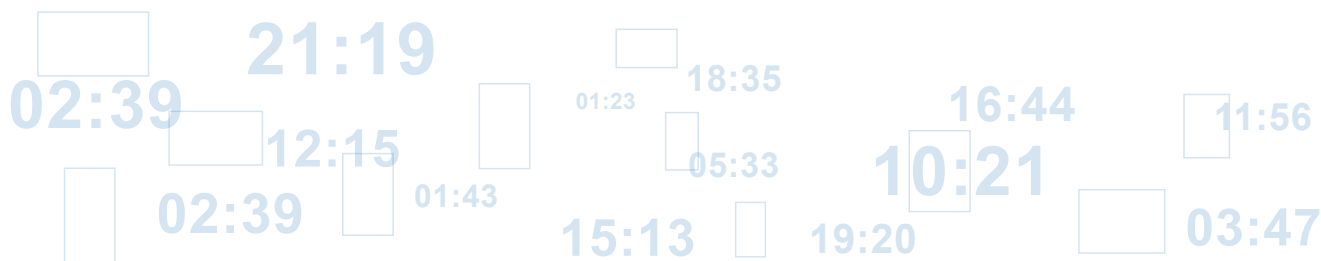


PLATFORM EDITIONS

BRIEFCAM INVESTIGATOR	BRIEFCAM INVESTIGATOR FOR TEAMS	BRIEFCAM PROTECT	BRIEFCAM RAPID REVIEW	BRIEFCAM INSIGHTS
File-based	File-based	File-based and VMS	VMS	VMS
Review	Review	Review, Research, Respond	Review	Review, Research, Respond
Single-user	Multi-user	Multi-user	Multi-user	Multi-user

OBJECT FILTERS

SOURCE	Limit objects to specific cameras or files
TIME RANGE	Limit the search criteria to specific time ranges
CLASS	<p>Select Classes based on their category or their specific member objects:</p> <p>Class Categories: People, Two-Wheeled Vehicles, Other Vehicles, and Animals</p> <p>People Class: Man, Woman, Boy, and Girl</p> <p>Two-Wheeled Vehicle Class: Bicycle and Motorcycle</p> <p>Other Vehicles Class: Car, Pickup, Van, Truck, Bus, Train, Airplane, and Boat</p> <p>Animals Class: Dog, Cat, Bird, and Horse</p>
ATTRIBUTES	<p>Select Attributes within a Class to further refine the search:</p> <p>Lower Wear: Long, Short and by Color</p> <p>Upper Wear: Short/No Sleeves, Long Sleeves and by Color</p> <p>Hats: Hats, No Hats</p> <p>Bags: Backpacks, Handheld Bags</p>
COLOR	Identify objects according to any combination of Brown, Red, Orange, Yellow, Green, Lime, Cyan, Purple, Pink, White, Grey, and Black
SIZE	Select objects based on their actual (real-life) size from a histogram of sizes relevant to a specific case
SPEED	Select objects based on their actual speed from a histogram of speeds relevant to a specific case
DWELL	Select objects dwelling for longer than a certain period in a scene
DIRECTION	Select objects according to their direction as visually seen in the video
APPEARANCE SIMILARITY	<p>People Similarity: Identify similar looking people</p> <p>Vehicle Similarity: Identify similar looks vehicles</p>
FACE RECOGNITION	<p>View All Faces: View all the faces that were detected in a case</p> <p>Search by Face: Search by face match, external image or watchlist</p>
AREA	Identify objects included or excluded within one or more user-defined 3- or 4-sided polygon areas
PATH	Identify objects traveling along one or more user-defined paths



TECHNICAL SPECIFICATIONS

SUPPORTED RESOLUTION	Minimum CIF, Maximum 4K
SUPPORTED FRAME RATE (FPS)	8-30 frames per second
SUPPORTED VIDEO FILE FORMATS	.AVI, .MKV, .MPEG4, .MOV, .WMV, .DVR, .ASF, .RT4, .DIVX, .264, .H264, .H265, .GE5, .TS, .3GP, .XBA (single stream and multi-stream), .MP4, .FLV
SUPPORTED CODECS	H.264, H.265/HEVC, MPEG-4, H.263
FILE-BASED INGESTION	Multi-file videos or single file videos
SUPPORTED VMS PLATFORMS	Avigilon, Bosch, CASD, Digifort, Digivod, Exacq, FLIR (formerly DVTel), Genetec, GeoVision, Hikvision, IndigoVision, Milestone, OnSSI/SeeTec, Qognify (formerly Nice), Salient, Teleste, Timespace (decoder), Verint
SUPPORTED CAMERA TYPES	Fixed Cameras
SINGLE SIGN-ON (SSO)	Microsoft Active Directory, including user groups (OU support)
FACE RECOGNITION	Minimum Face Size: 30x30 pixels
SUPPORTED LANGUAGES	Brazilian Portuguese, Chinese Simplified, Chinese Traditional, Danish, Dutch, English, Finnish, French, German, Japanese, Korean, Latin Spanish, Turkish, Vietnamese
SUPPORTED BROWSERS	Google Chrome Desktop

ADMINISTRATION AND MANAGEMENT SPECIFICATIONS

STORAGE AND DATABASE	Oracle Database 11g Release 2, Express and Standard Editions
PORTS & PROTOCOLS	HTTP/HTTPS: 80, 443, 8094, 8099, 8666, 8669 (Web Services) LDAP: 389 (Video Synopsis Server) SQL*Net: 1521 (Oracle client)

ABOUT BRIEFCAM

BriefCam is the industry's leading provider of Video Synopsis® and Deep Learning solutions for rapid video review and search, face recognition, real-time alerting and quantitative video insights. By transforming raw video into actionable intelligence, BriefCam dramatically shortens the time-to-target for security threats, while increasing safety and optimizing operations. BriefCam's award-winning products are deployed by law enforcement and public safety organizations, government and transportation agencies, major enterprises, healthcare and educational institutions, and local communities worldwide. For more information about transforming video surveillance into actionable intelligence, visit www.briefcam.com.